

HiPerformance Builders



Shown with optional exterior features

THE RICHLAND

- 1st Floor - 983 Sq. Ft.
 - 2nd Floor - 983 Sq. Ft.
- Total Finished Area - 1,966 Sq. Ft.**

*The Legacy Coastal
Collection*

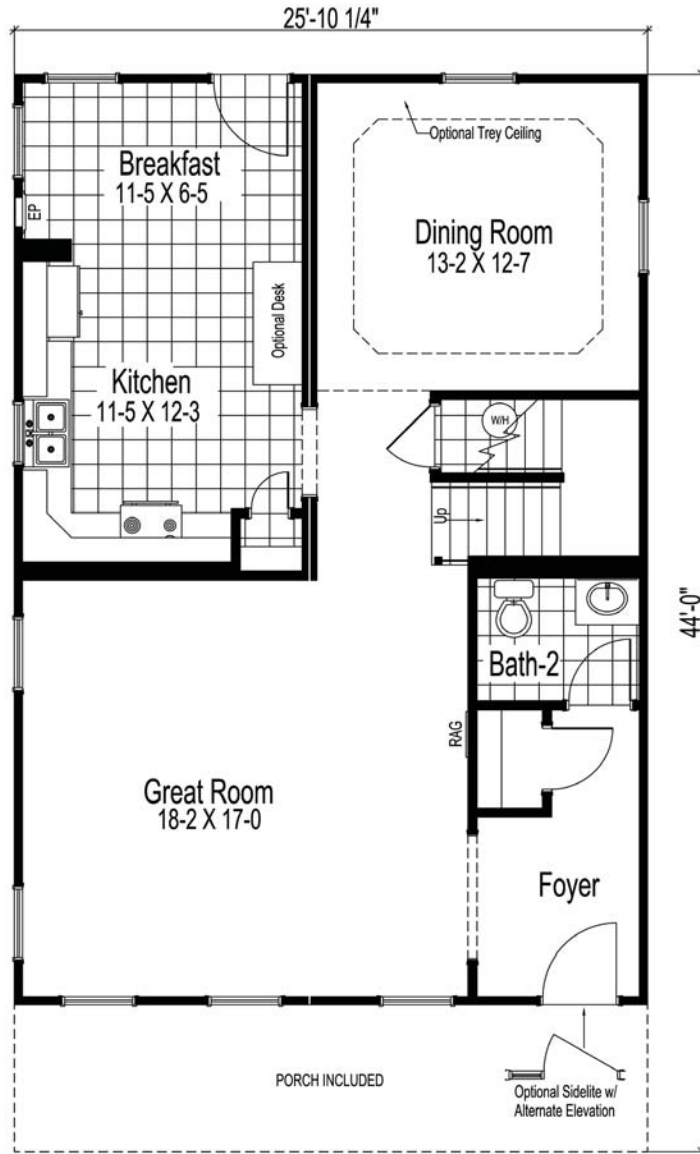
These are artist renderings for sales purposes only.
Refer to working drawings for actual dimensions.
© 2011 Nationwide Homes 2/16/11

NATIONWIDE
Homes

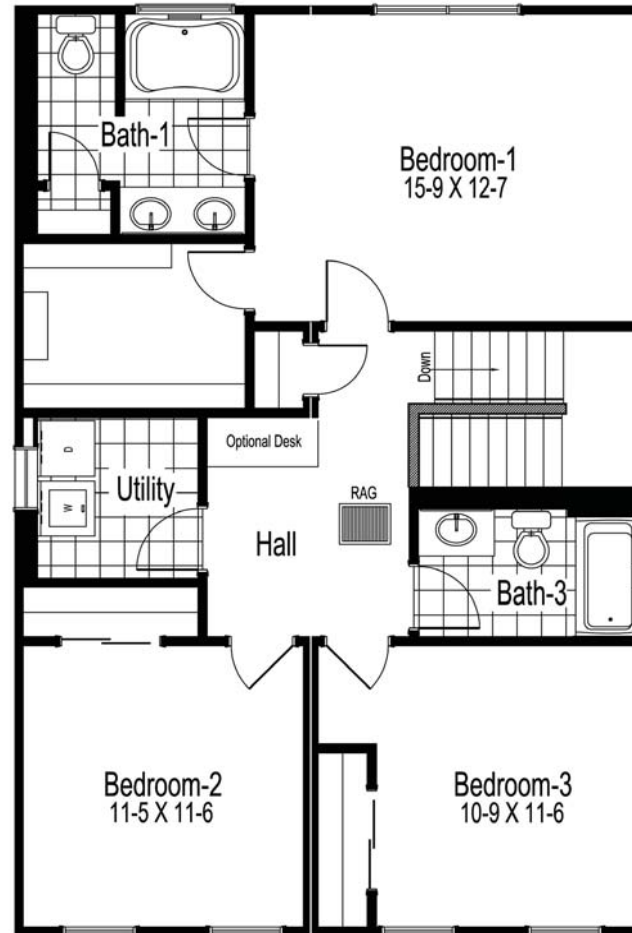
1100 Rives Road • P.O. Box 5511
Martinsville, Virginia 24115
Phone: (276) 632-7100

www.nationwide-homes.com

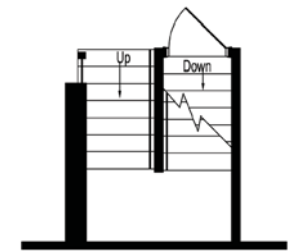
THE RICHLAND



First Level



Second Level



Optional Basement Plan