

# HiPerformance Builders



Shown with optional exterior features

## THE HAWTHORNE

■ Total Finished Area - 1,739 Sq. Ft.

*The Village* Collection

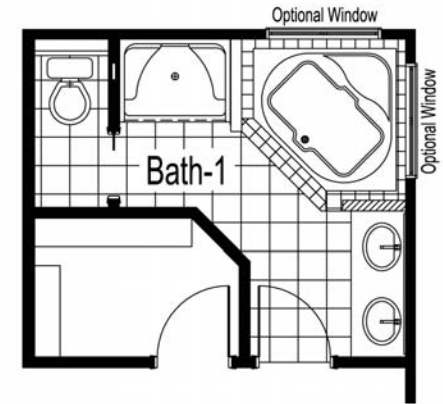
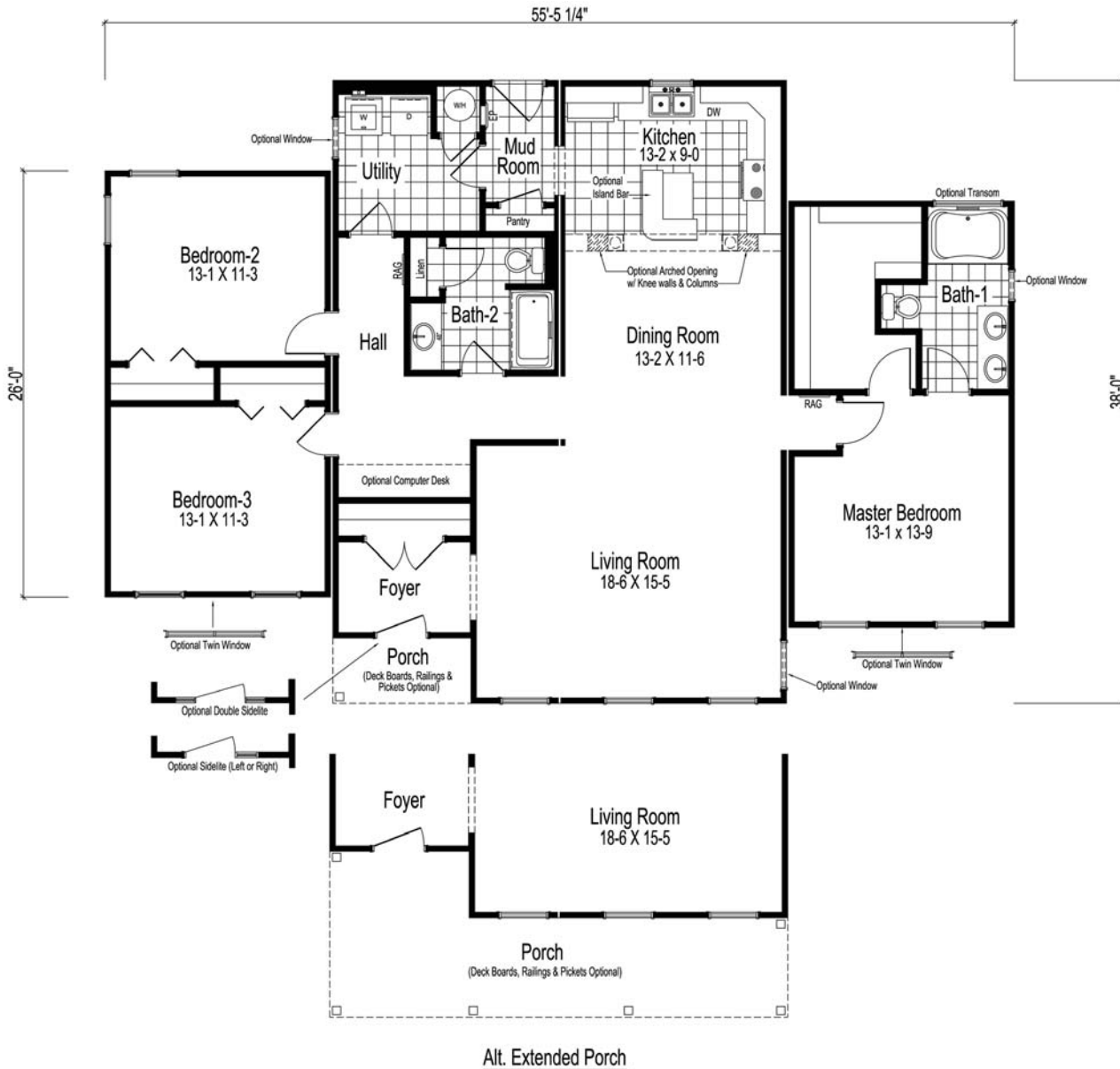
These are artist renderings for sales purposes only.  
Refer to working drawings for actual dimensions.  
© 2010 Nationwide Homes 2/10

**NATIONWIDE**  
*Homes*

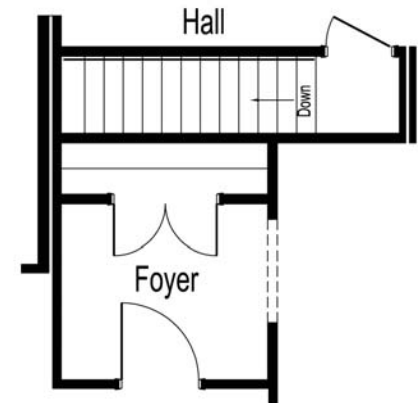
1100 Rives Road • P.O. Box 5511  
Martinsville, Virginia 24115  
Phone: (276) 632-7100  
Fax: (276) 666-2537

[www.nationwide-homes.com](http://www.nationwide-homes.com)

# THE HAWTHORNE



Alt. Master Bath-1



Optional Basement Plan